

# Office to let

## Dem Dobrescu Offices

Bucharest, Sector 1, 5 Dem Dobrescu St.

### Building information

|                      |              |
|----------------------|--------------|
| Building status      | Existing     |
| Year of construction | 2004         |
| Parking ratio        | To be agreed |
| Total building area  | 900 sq m     |

### Commercial terms

|                    |               |
|--------------------|---------------|
| Office space*      | after login * |
| Parking            | after login * |
| Service charge*    | after login * |
| Minimum lease term | after login * |
| Availability       | after login * |

\* Asking terms for m<sup>2</sup>/month

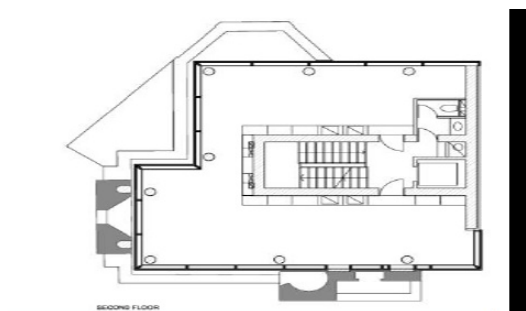
### Location



### Available space

Building completely leased

### Typical floor plan



### Public transport

Metro: M2

Bus: 226,300

### Contact



+40 21 302 3400

More information